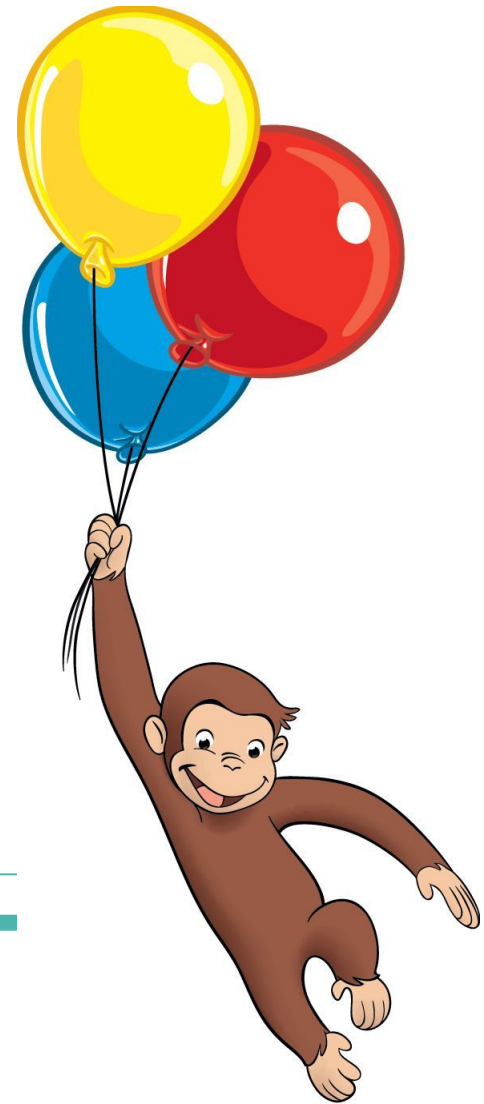




**Welcome to
the 2023-24
school year!**



Be kind,
be Brave,
& be...



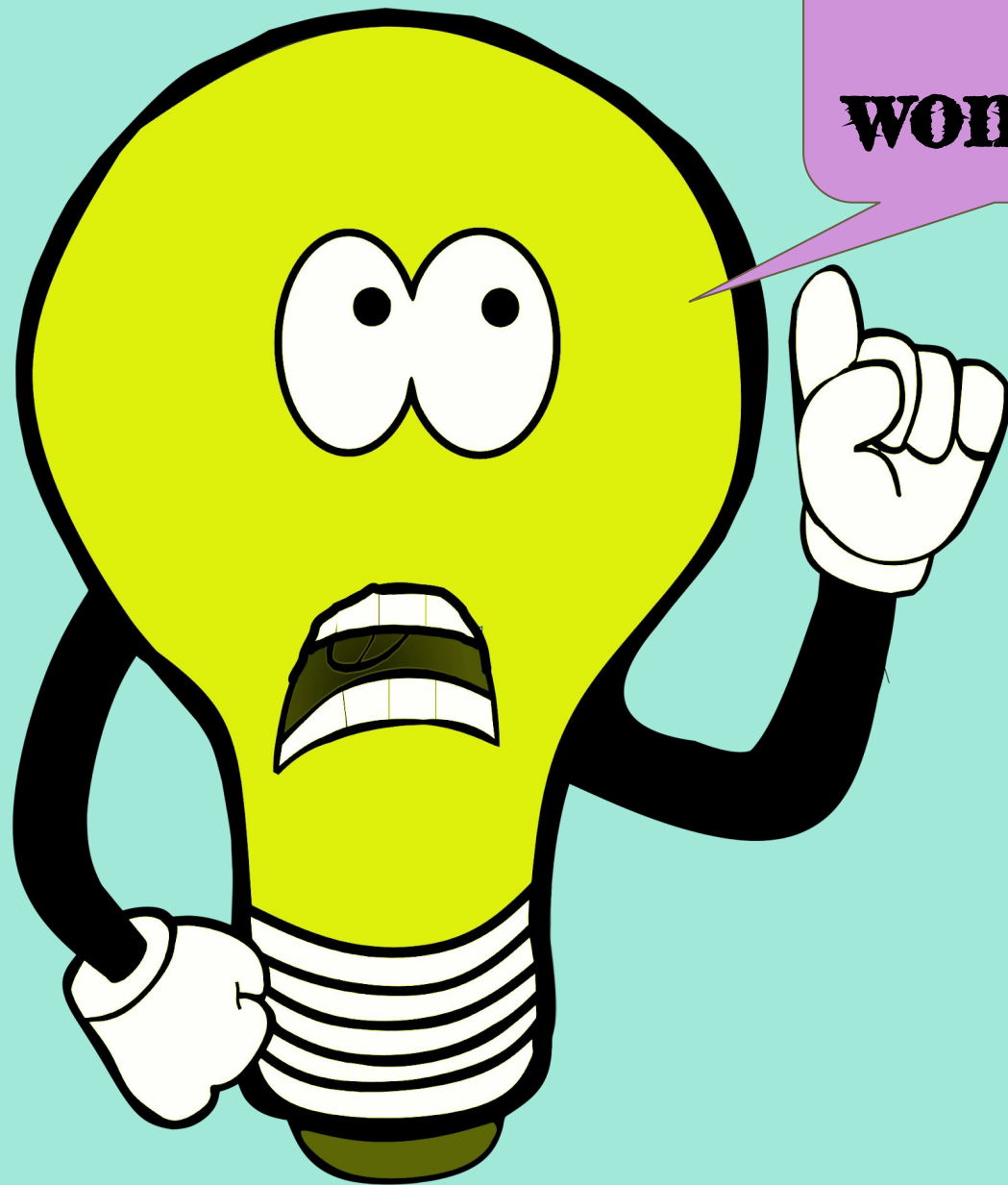
I
wonder...

What
if...?

Be kind,
be Brave,
& be

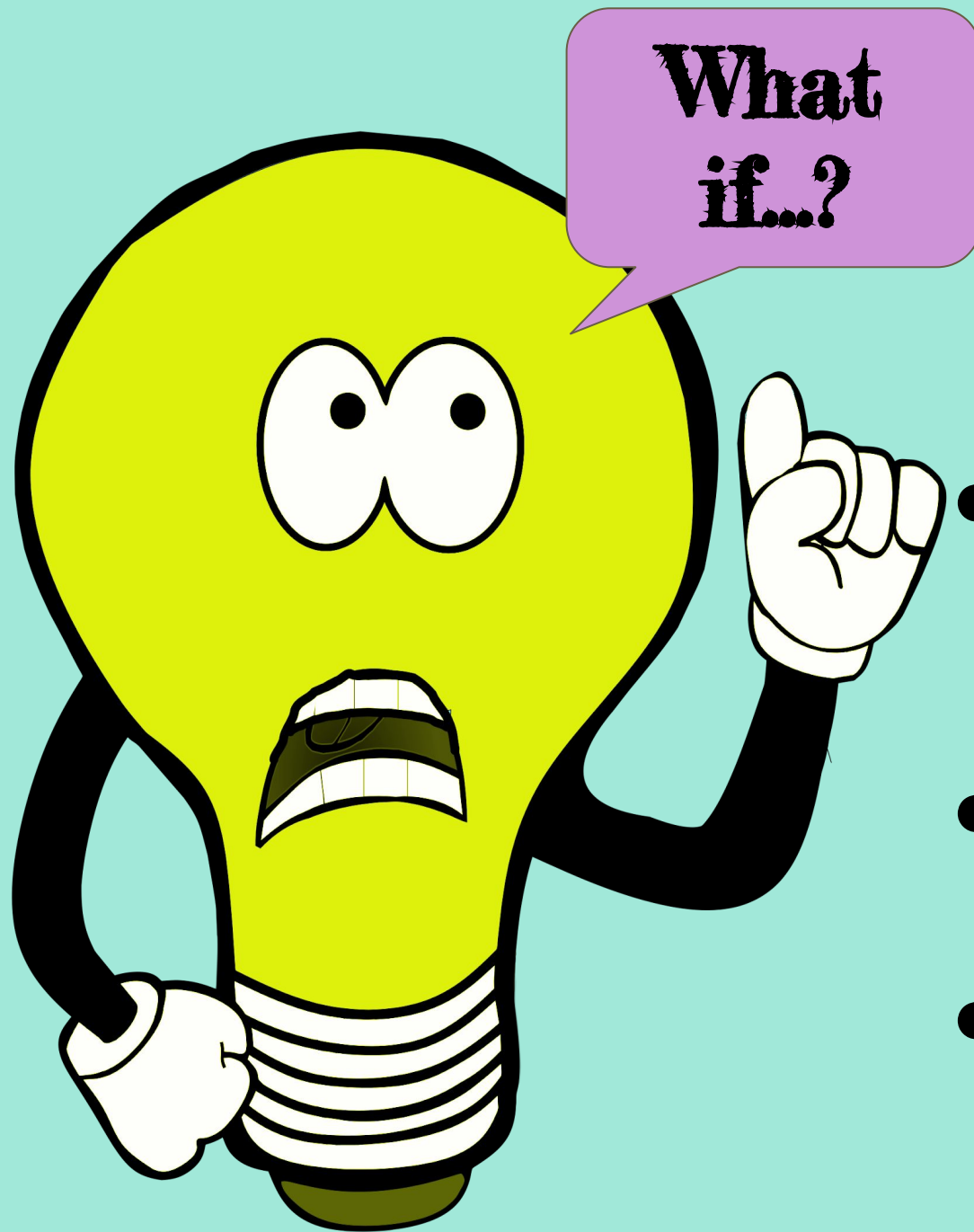
CURIOUS!





**I
wonder...**

- ...why this works that way!
- ...what would happen if...
- ...how that person thought of that!



- I tried something new?
- I did it a different way?
- It isn't what I thought it was?



- Everyone in La Conner Elementary agreed to do some things the same way?



We are kind

We are safe

We are responsible



**Be friendly and
thoughtful of
others**

We are kind

We are safe

**Look out for yourself
& other people, so no
one gets hurt**

We are responsible

**Do what you're supposed to
do and own your actions**

It is kind, safe, & responsible to share the same behavior in our shared spaces

LCES Braves PBIS School-Wide Behavior Matrix

| | Voice level | Be Kind | Be Safe | Be Responsible |
|------------------|-------------|--|--|--|
| Hallway | 0 | <ul style="list-style-type: none"> • Keep hands and feet to self • Walk quietly • Let others learn | <ul style="list-style-type: none"> • Walk face forward • Keep to the right • Follow directions from teachers | <ul style="list-style-type: none"> • Walk with purpose • During class have a pass • Respect the wall art |
| Restroom | 1 | <ul style="list-style-type: none"> • Respect privacy • Wait your turn • Leave it cleaner than you found it | <ul style="list-style-type: none"> • Wash hands • Report problems to an adult • One student per class at a time | <ul style="list-style-type: none"> • Go, flush, wash with soap • Return to class quickly • Leave it cleaner than you found it |
| Assembly | 0 | <ul style="list-style-type: none"> • Show SHINE • Use polite applause • Participate appropriately | <ul style="list-style-type: none"> • Show SHINE • Walk at all times • Enter and exit quietly | <ul style="list-style-type: none"> • Show SHINE • Follow adult's directions • Engage your brain |
| Recess | 4 | <ul style="list-style-type: none"> • Take turns • Use kind words and actions • Invite others to play | <ul style="list-style-type: none"> • Stay in your area • Practice your problem-solving skills • Get an adult if you need help | <ul style="list-style-type: none"> • Line up safely when the whistle blows • Use equipment appropriately • Play by the rules |
| Cafeteria | 2 | <ul style="list-style-type: none"> • Respect other's space • Use kind words and actions • Use good table manners | <ul style="list-style-type: none"> • Wait to be excused by your teacher • Walk at all times • Eat your own food | <ul style="list-style-type: none"> • Leave a clean table, chair and floor • Eat first, then talk • Raise your hand for help |
| Office | 2 | <ul style="list-style-type: none"> • Wait your turn • Speak kindly to others • Respect others privacy | <ul style="list-style-type: none"> • Be kind, safe, responsible on the way • Sit quietly until it's your turn • Follow directions | <ul style="list-style-type: none"> • Check in with Mrs. McCoy first • Turn in your office slip • Walk directly back to class |
| Bus | 1 | <ul style="list-style-type: none"> • Visit quietly with your neighbors • Use kind words and actions • Keep your body calm | <ul style="list-style-type: none"> • Stay seated facing forward • Follow the driver's directions • Report problems to the driver | <ul style="list-style-type: none"> • Listen to bus driver • Keep your backpack closed • Keep the bus clean |

It is kind, safe,
& responsible
to show
SHINE!



It is kind, safe,
& responsible
to use the
right VOICE!

Voice Levels

4

Outside Voice

Playground Talk

3

Loud Proud Voice

Classroom Talk

2

Normal Voice

Table Talk

1

Whisper Voice

Partner Talk

0

Silent Voice

No Talking

Be kind,
be Brave,
& be

CURIOUS!



Let's have a
great year
together!